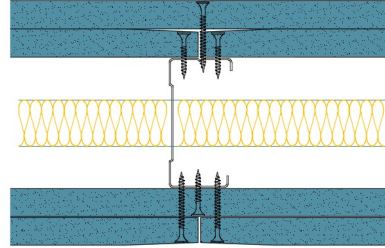


## 70-B-60(25) - SPEEDLINE System Data Sheet - Version V1 (24-10-23)

SPEEDLINE 70mm 'C' Stud Partition @600mm Ctrs,  
with 2x BG Gyproc 15mm SoundBloc each side,  
25mm APR



### System Performance Breakdown

Fire Resistance:

BS476 Part 22:1987:

Test Ref & Date or Applied Ref & Report:

Max Height:

Thickness:

Duty Grade: BS 5234: Part 2:1992:

Sound Insulation:

**90/90 Minutes** (Integrity/Insulation).

**BTC 17440F - BRE Report P102396-1011A**

**Refer to Speedline Specification Clause**

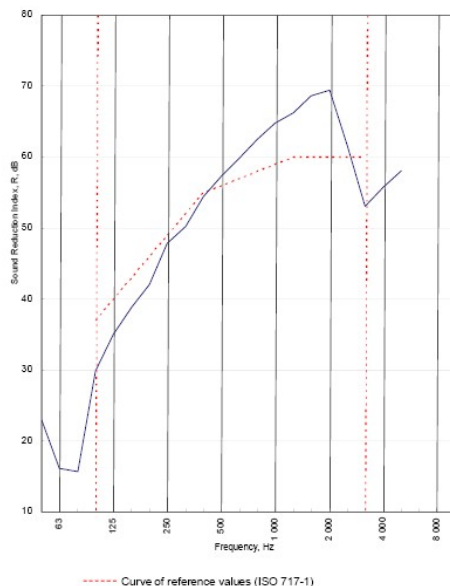
**132 mm.** (At Base Track, Excluding Finishes)

**Severe - Annexes A-F**

**56 R<sub>w</sub>dB**, Date Tested or Assessed Against - 70-B-59(25)

Test Code:  
H17450AA  
Test Date:  
29/06/2011

Freq. Hz	R dB
50	22.9
63	16.1
80	15.6
100	29.9
125	35.0
160	38.8
200	42.0
250	47.8
315	50.2
400	54.5
500	57.3
630	59.9
800	62.5
1000	64.8
1250	66.3
1600	68.7
2000	69.4
2500	61.6
3150	53.1
4000	55.8
5000	58.1
6300	
8000	
10000	



Rating according to BS EN ISO 717-1:1997  
Evaluation based on laboratory measurement results obtained by an engineering method:

**R<sub>w</sub> (C;Ctr) = 56 (-3;-9) dB**  
Max dev. 7.1 dB at 100 Hz

C <sub>50-100</sub> = -10 dB	C <sub>50-500</sub> = -9 dB	C <sub>100-500</sub> = -2 dB
C <sub>125-150</sub> = -22 dB	C <sub>125-500</sub> = -22 dB	C <sub>125-1000</sub> = -9 dB

TESTED AT ONE OF THE UKAS ACCREDITED LABORATORIES BELOW

- B.T.C (H-Ref on Graph)
- B.R.E
- AIRO
- S.R.L

